

APC Back-UPS™ 550

Part Number: BE550G-SP

Battery Backup with Surge Protection for Electronics and Computers

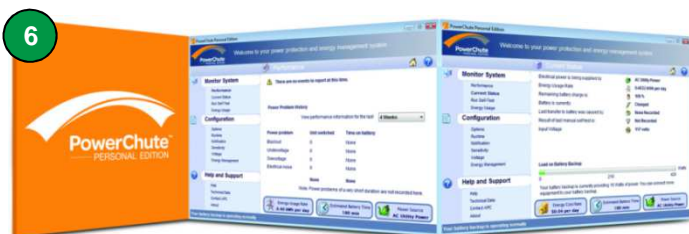
APC by Schneider Electric's Back-UPS 550 provides enough battery backup power so you can work through medium length power outages. It also safeguards your equipment against damaging surges and spikes that travel along utility and phone lines. The Back-UPS series is "greener" than ever, using an ultra-efficient design that consumes less power during normal operation than any other battery backup in its class. This reduces your energy costs and environmental impact. Combined with all of the standard features of the Back-UPS series, the 550 is the perfect unit to protect your productivity from the constant threat of bad power and lost data.

Product Applications:

PC and home networking (wireless router, modem)
Televisions and gaming consoles
Projectors with impulse power
POS Equipment
Networking Storage (NAS)
Landline Cordless Phone

Product Features:

- 1 LED Indicator and Audible Alarms**
Quickly understand the unit and power status through visual and audible indicators.
- 2 Power Saving Sockets**
"Green mode" energy saving feature automatically powers off peripheral electronics when the master device, usually a PC, hibernates or is shut down. Power to peripherals is immediately restored when the master device wakes up or is switched on. Achieve high operating efficiency and reduce energy consumption without sacrificing any protection.
- 3 8 battery backup and surge protected sockets**
 - 4 battery backup and surge protectionKeep critical electronic equipment running when the power goes out or fluctuates at dangerous levels, so you can protect your work and save your data.
 - 4 surge protection onlyProtect your secondary electronics from harmful surges and spikes without reducing battery capacity used to run primary electronics during power outages.
- 4 Data Line Surge Protection**
Provides protection of connected equipment from damaging power surges on telephone and Ethernet data lines.
- 5 Push Button Circuit Breaker**
Provides for easy recovery from circuit overloads and protects your fuse box and electronics from electrical damage.
- 6 USB Connection and PowerChute Software**
Use your PC to access additional power protection and management features for your Back-UPS 550 via a USB Port.



Back-UPS 550 Specifications

Model Number	BE550G-SP
Output	
Output Capacity	550 VA / 330 Watts
Output Voltage / Frequency (On utility)	230V / 47-63 Hz
Output Voltage / Frequency (On battery)	230V +/-8%, 50 or 60 Hz +/- 1Hz (autosensing)
Output Connections	8 Schuko CEE 7 sockets (4 battery backup and surge protection, 4 surge protection only)
Waveform Type	Stepped Approximation to Sine Wave
Input	
Input Voltage / Frequency	230V / 50/60 Hz
Input Connection	1.83M power cord Schuko CEE 7/7P
Surge Protection	
AC Power Surge Protection	All sockets
Data Line Surge Protection	Analog phone line for phone/fax/modem/DSL (RJ-11 connector), Network line - 10/100 Base-T Ethernet (RJ-45 connector)
Physical	
Unit Dimensions (H x W x D)	89 x 224 x 311 mm
Unit Weight	6.02 Kg
Shipping Dimensions (H x W x D)	127 x 279 x 400 mm
Shipping Weight	6.93 Kg
Color	Black
UPC Code	731304271680
Battery	
Battery Type	Maintenance-free, sealed lead-acid battery, leak proof
Battery Size	12 volt, 9 Ah
Management	
Alarms	Visual (LED) and audible alarms
Auto Shutdown Software	Power Chute Personal Edition (with USB and serial interface)
Warranty	2 years repair or replace, 3 years repair or replace for European Union countries
Equipment Protection Policy	Lifetime : 100,000 Euro (not available in all regions)

APC by Schneider Electric

132 Fairgrounds Rd
West Kingston, RI 02892

www.apc.com

APC[®]
by Schneider Electric